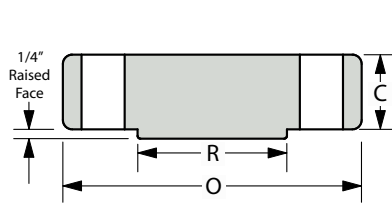
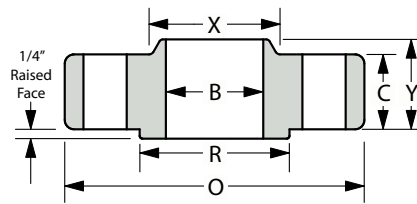


CLASS 900#

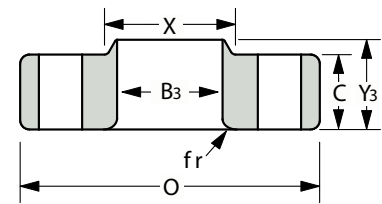
ANSI B16.5 • Standard Forged Flanges Dimensional Data



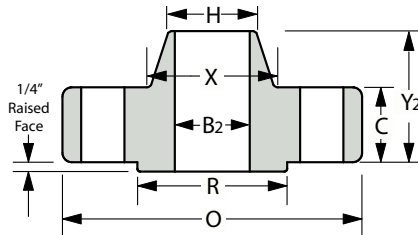
BLIND (BL)



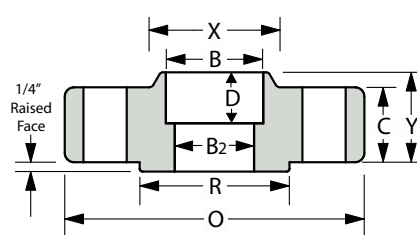
SLIP-ON (SO)



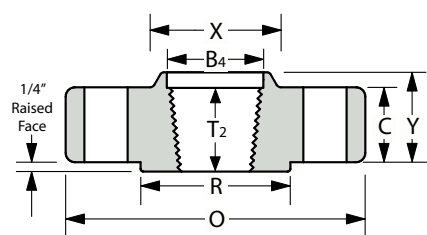
LAP JOINT (LJ)



WELD NECK (WN)



SOCKET WELD (SW)



THREADED (TH)

Nom. Pipe Size	O (Outside Diameter)	R (Raised Face)	X (Hub Dia.)	C	T2 (Min. Thread Length)	Y (Overall Length)	Y2	Y3	B (Inside Dia.)	B2	B3	B4	fr	D	H (bevel hub)	# of Holes - Diameter	Bolt Circle Dia.
1/2"	4.75	1.38	1.50	0.88	0.88	1.25	2.38	1.25	0.88	This dimension is determined by the pipe schedule and its corresponding inside diameter.	0.90	0.93	0.13	0.38	0.84	4-0.88	3.25
3/4"	5.13	1.69	1.75	1.00	1.00	1.38	2.75	1.38	1.09		1.11	1.14	0.13	0.44	1.05	4-0.88	3.50
1"	5.88	2.00	2.06	1.13	1.13	1.63	2.88	1.63	1.36		1.38	1.41	0.13	0.50	1.32	4-1.00	4.00
1-1/4	6.25	2.50	2.50	1.13	1.19	1.63	2.88	1.63	1.70		1.72	1.75	0.19	0.56	1.66	4-1.00	4.38
1-1/2	7.00	2.88	2.75	1.25	1.25	1.75	3.25	1.75	1.95		1.97	1.99	0.25	0.63	1.90	4-1.13	4.88
2	8.50	3.62	4.13	1.50	1.50	2.25	4.00	2.25	2.44		2.46	2.50	0.31	0.69	2.38	8-1.00	6.50
2-1/2	9.63	4.12	4.88	1.63	1.88	2.50	4.13	2.50	2.94		2.97	3.00	0.31	0.75	2.88	8-1.13	7.50
3"	9.50	5.00	5.00	1.50	1.63	2.13	4.00	2.13	3.57		3.60	3.63	0.38	*	3.50	8-1.00	7.50
4"	11.50	6.19	6.25	1.75	1.88	2.75	4.50	2.75	4.57		4.60	4.63	0.44	*	4.50	8-1.25	9.25
5"	13.75	7.31	7.50	2.00	2.13	3.13	5.00	3.13	5.66		5.69	5.69	0.44	*	5.56	8-1.38	11.00
6"	15.00	8.50	9.25	2.19	2.25	3.38	5.50	3.38	6.72		6.75	6.75	0.50	*	6.63	12-1.25	12.50
8"	18.50	10.62	11.75	2.50	2.50	4.00	6.38	4.50	8.72		8.75	8.75	0.50	*	8.63	12-1.50	15.50
10"	21.50	12.75	14.50	2.75	2.81	4.25	7.25	5.00	10.88		10.92	10.92	0.50	*	10.75	16-1.50	18.50
12"	24.00	15.00	16.50	3.13	3.00	4.63	7.88	5.63	12.88		12.92	12.92	0.50	*	12.75	20-1.50	21.00
14"	25.25	16.25	17.75	3.38	3.25	5.13	8.38	6.13	*		14.18	14.18	0.50	*	14.00	20-1.63	22.00
16"	27.75	18.50	20.00	3.50	3.38	5.25	8.50	6.50	*		16.19	16.19	0.50	*	16.00	20-1.75	24.25
18"	31.00	21.00	22.25	4.00	3.50	6.00	9.00	7.50	*	18.20	18.19	0.50	*	18.00	20-2.00	27.00	
20"	33.75	23.00	24.50	4.25	3.63	6.25	9.75	8.25	*	20.25	20.19	0.50	*	20.00	20-2.13	29.50	
24"	41.00	27.25	29.50	5.50	4.00	8.00	11.50	10.50	*	24.25	24.19	0.50	*	24.00	20-2.63	33.50	

1. The C and Y dimensions do not include the 1/4" raised face for the 600# and above weight classes.

2. Tolerances are standard as per ANSI B 16.5

3. The Y3 dimension is the length for a "true" lap joint, however, it is usually accepted to make these to a standard slip-on length.

4. All shown dimensions are in inches.

5. Bolts 1/8" smaller than hole dia. Columns marked * have no corresponding value in ASME code, therefore, have been left blank.