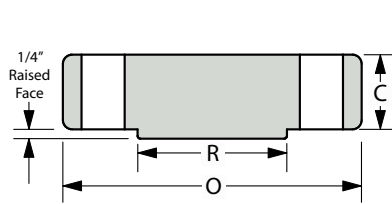
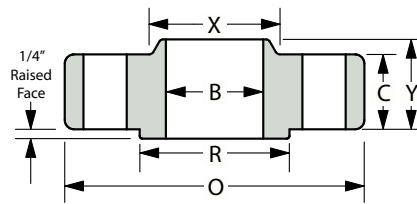


# CLASS 600#

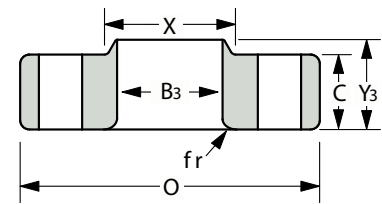
## ANSI B16.5 • Standard Forged Flanges Dimensional Data



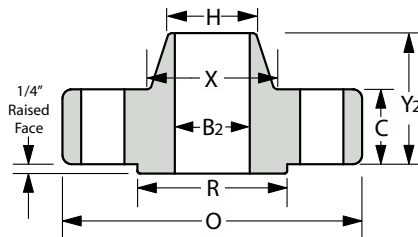
**BLIND (BL)**



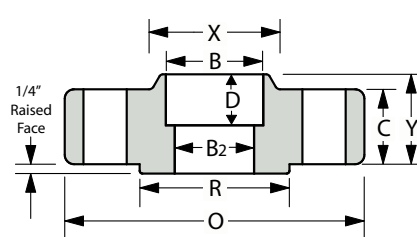
**SLIP-ON (SO)**



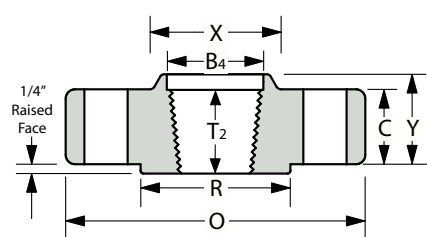
**LAP JOINT (LJ)**



**WELD NECK (WN)**



**SOCKET WELD (SW)**



**THREADED (TH)**

Nom. Pipe Size	O (Outside Diameter)	R (Raised Face)	X (Hub Dia.)	C	T2 (Min. Thread Length)	Y (Overall Length)	Y2	Y3	B (Inside Dia.)	B2	B3	B4	fr	D	H (bevel hub)	# of Holes - Diameter	Bolt Circle Dia.	
1/2"	3.75	1.38	1.50	0.56	0.62	0.88	2.06	0.88	0.88	This dimension is determined by the pipe schedule and its corresponding inside diameter.	0.90	0.93	0.12	0.38	0.84	4-0.62	2.62	
3/4"	4.62	1.69	1.88	0.62	0.62	1.00	2.25	1.00	1.09		1.11	1.14	1.14	0.12	0.44	1.05	4-0.75	3.25
1"	4.88	2.00	2.12	0.69	0.69	1.06	2.44	1.06	1.36		1.38	1.41	1.41	0.12	0.50	1.32	4-0.75	3.50
1-1/4	5.25	2.50	2.50	0.81	0.81	1.12	2.62	1.12	1.70		1.72	1.75	1.75	0.19	0.56	1.66	4-0.75	3.88
1-1/2	6.12	2.88	2.75	0.88	0.88	1.25	2.75	1.25	1.95		1.97	1.99	1.99	0.25	0.62	1.90	4-0.88	4.50
2	6.50	3.62	3.31	1.00	1.12	1.44	2.88	1.44	2.44		2.46	2.50	2.50	0.31	0.69	2.38	8-0.75	5.00
2-1/2	7.50	4.12	3.94	1.12	1.25	1.62	3.12	1.62	2.94		2.97	3.00	3.00	0.31	0.75	2.88	8-0.88	5.88
3"	8.25	5.00	4.62	1.25	1.38	1.81	3.25	1.81	3.57		3.60	3.63	3.63	0.38	0.81	3.50	8-0.88	6.62
3-1/2	9.00	5.50	5.25	1.38	1.56	1.94	3.38	1.94	4.07		4.10	4.13	4.13	0.38	*No ASME data past 3" for this dimension	4.00	8-1.00	7.25
4"	10.75	6.19	6.00	1.50	1.62	2.12	4.00	2.12	4.57		4.60	4.63	4.63	0.44		4.50	8-1.00	8.50
5"	13.00	7.31	7.44	1.75	1.88	2.38	4.50	2.38	5.66		5.69	5.69	5.69	0.44		5.56	8-1.12	10.50
6"	14.00	8.50	8.75	1.88	2.00	2.62	4.62	2.62	6.72		6.75	6.75	6.75	0.50		6.63	12-1.12	11.50
8"	16.50	10.62	10.75	2.19	2.25	3.00	5.25	3.00	8.72		8.75	8.75	8.75	0.50		8.63	12-1.25	13.75
10"	20.00	12.75	13.50	2.50	2.56	3.38	6.00	4.38	10.88		10.92	10.88	10.88	0.50		10.75	16-1.38	17.00
12"	22.00	15.00	15.75	2.62	2.75	3.62	6.12	4.62	12.88		12.92	12.94	12.94	0.50		12.75	20-1.38	19.25
14"	23.75	16.25	17.00	2.75	2.88	3.69	6.50	5.00	14.14		14.18	14.19	14.19	0.50		14.00	20-1.50	20.75
16"	27.00	18.50	19.50	3.00	3.06	4.19	7.00	5.50	16.16		16.19	18.19	18.19	0.50		16.00	20-1.62	23.75
18"	29.25	21.00	21.50	3.25	3.12	4.62	7.25	6.00	18.18		18.20	18.10	18.10	0.50		18.00	20-1.75	25.75
20"	32.00	23.00	24.00	3.50	3.25	5.00	7.50	6.50	20.20		20.25	20.19	20.19	0.50	20.00	24-1.75	28.50	
22"	34.25	25.25	26.25	3.75	---	5.25	7.75	6.88	22.22		22.25	---	---	0.50	22.00	24-1.75	30.63	
24"	37.00	27.25	28.25	4.00	3.62	5.50	8.00	7.25	24.25	24.25	24.19	24.19	0.50	24.00	24-2.00	33.00		

1. The C and Y dimensions do not include the 1/4" raised face for the 600# and above weight classes.  
 2. Tolerances are standard as per ANSI B 16.5

3. The Y3 dimension is the length for a "true" lap joint, however, it is usually accepted to make these to a standard slip-on length.  
 4. All shown dimensions are in inches. 5. Bolts 1/8" smaller than hole dia.